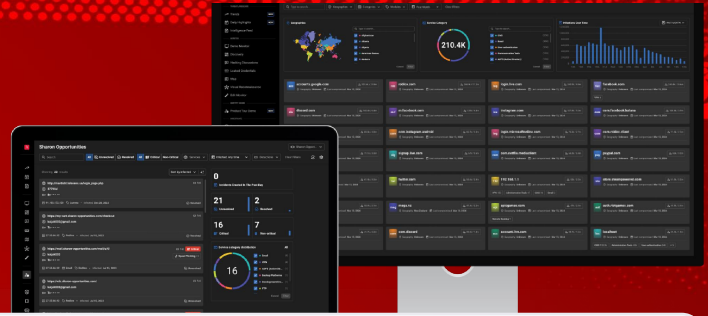
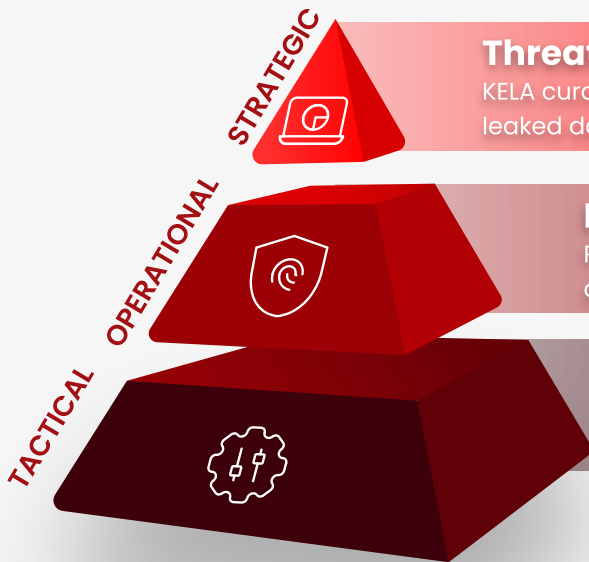


# Ransomware Protection



## Stop the #1 cause of cyber attacks

Ransomware is the top cyber threat facing organizations today. The KELA Ransomware Protection Suite delivers a comprehensive, intelligence-driven defense, designed to neutralize ransomware threats before they can impact your business.



### Threat Landscape

KELA curated intelligence on ransomware events, network access on sale, leaked databases, and new threats across all sectors

### Identity Guard

Proactive, Real-Time Defense Against compromised assets and accounts - The #1 Cause of Ransomware

### Technical Intelligence

Automated detection of compromised IPs and domains involved in cybercrime activities



#### Stay Ahead of Ransomware with Real-Time Identity Protection

Intercept compromised employee identities from hundreds of millions of compromised credentials, updated in real-time.



#### Effortless Integration and Automation

Simple and intuitive integration within your environment and processes.



#### Immediate Return On Investment

Rapid deployment with self-service asset configuration, prioritized alerts for remediation within minutes.

## Stay ahead of the threats with KELA's intelligence insights

- High-level intelligence on the ever-changing cybercrime ecosystem.
- Dashboards of top trends and daily highlights feed curated by KELA's cyber intelligence experts.
- Stay informed about ransomware events, network access on sale, leaked databases, and new threats across all industries.

## Intercept underground commerce of compromised identities

- Real-time alerts and notifications on compromised assets and credentials
- Rapid Onboarding Full discovery and of organizations' Domains, IPs and SaaS assets in minutes
- Automatic severity classification and priority setting, surfacing up the most critical alerts for remediation

## Detect and integrate suspicious IPs and domains involved in cybercrime activities

- Automated detection and monitoring of potentially compromised IPs and domains involved in cybercrime activity in a structured, machine-readable format
- Detected assets, their context, and MRTI properties, such as STIX, are shared with the users via API
- Simple integration of feeds into a SIEM, SOAR, or any other security solution



### Seamless Integration & Automation

The KELA Ransomware Protection Suite seamlessly integrates with your SIEM, SOAR, and other security systems, supporting automated responses such as MFA enforcement, password resets, and IP blocking. This automation streamlines your defense processes, ensuring that your organization can act swiftly and efficiently against ransomware threats.



### Actionable Threat Intelligence

Use KELA's Technical Intelligence to get actionable cybercrime threat intelligence and protect your organization against compromised network infrastructure that can be exploited by malicious threat actors.



The KELA Ransomware Protection Suite combines advanced threat intelligence, real-time identity monitoring, and automated defense capabilities to deliver a powerful, technical solution against the #1 cyber threat—ransomware. Equip your organization with KELA's cutting-edge protection to stay ahead of attackers and secure your digital assets.